

PART NUMBER : JCN-U4CG-UAAA-XXXX

Plastic Color: _____
 A=Blue
 B=Black
 Package: _____
 R=Taping Reel
 T=Tary
 U=Tube
 Gold Plating: _____
 G=Gold Flash
 A=3u"
 B=6u"
 C=10u"
 D=15u"
 E=30u"

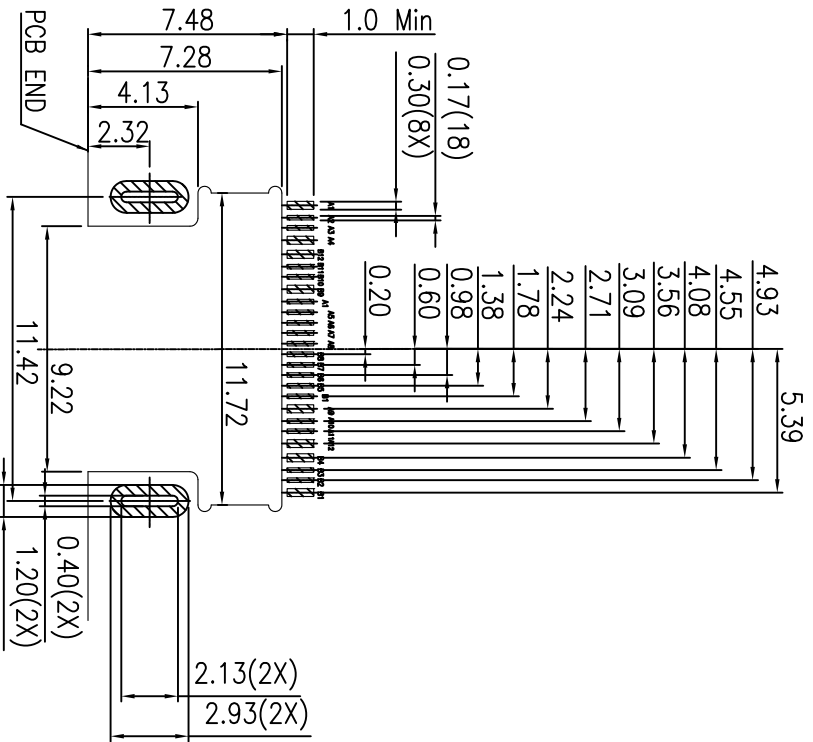
NOTES:

- ELECTRICAL CHARACTERISTICS:
 - 1-1 CONTACT CURRENT RATING: 1.25A FOR VBUS PIN AND ITS CORRESPONDING GND PIN, 0.25A MIN FOR ALL OTHER CONTACTS.
 - 1-2 CONTACT RESISTANCE: INITIAL 30 MILLIOHMS MAX FOR VBUS AND GND CONTACT, INITIAL 40 MILLIOHMS MAX FOR ALL OTHER CONTACT, AFTER DURABILITY 10 MILLIOHMS MAX CHANGE.
 - 1-3 DIELECTRIC WITH STANDING: 100 MEGOHMS MIN
- MECHANICAL CHARACTERISTICS:
 - 2-1 CONNECTOR MATING FORCE: 5~20N
 - 2-2 CONNECTOR UNMATING FORCE: 20N MIN INITIAL, 8N MIN AFTER DURABILITY.
 - 2-3 DURABILITY: 10000 CYCLES.
 - 2-4 OPERATING TEMPERATURE RANGE: -20°C TO +85°C
- DIMENSIONS ARE IN MILLIMETERS, BRACKETED DIMENSIONS ARE INCHES EQUIVALENTS.
- RECOMMENDED PROCESS: IR REFLOW PEAK TEMPERATURE 260°C
- THE CONNECTOR IS ROHS COMPLIANT AND HALOGEN FREE.
- WHEN PLUG IS INSERTED INTO CONNECTOR IN WORSE CONDITION, SPRING TIP TOUCH PCB, SO INHIBIT CIRCUIT IN SPRING TIP AREA.

Section B-B

CHECKED Leon		UNLESS OTHERWISE SPECIFIED TOLERANCE		NAME US832 Gen3x2/Gen3x1/US94 Gen3x2/Gen3 C1 Rev. SM/Other 0.06mm/0.13mm/Receptacle	
APPROVED Xavier		Dimensional Range Tolerances		SCALE UNIT NA mm	
REV. X1	NEW DESIGN	XX	±0.35	SIZE A4	SHEET 1/2
REVISION RECORD	DRAWN MIDDYV	XXX	±0.25	DOC. NO. JCN-U4CG-UAAA-XXXX	
MARK	DRAWN 050820	XXX	±0.15		
		ANGLE	45°		





RECOMMEND PCB LAYOUT

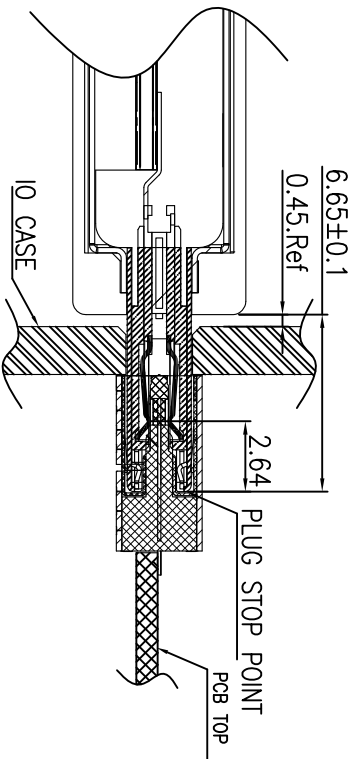
TOP VIEW Tolerance:±0.05mm



SOLDER AREA

Tolerance: +0.05mm

PIN ASSIGNMENT		
Pin Number	Signal Name	Description
A1	GND	Ground for Power Return
A2	SS TX1+	Positive half of first SuperSpeed TX differential pair
A3	SS TX1-	Negative half of first SuperSpeed TX differential pair
A4	VBUS	POWER
A5	CCI	Configuration Channel
A6	D+	USB2.0 differential pair
A7	D-	
A8	SBU1	Sideband Use (SBU)
A9	VBUS	POWER
A10	SS RX2-	Negative half of second SuperSpeed RX differential pair
A11	SS RX2+	Positive half of second SuperSpeed RX differential pair
A12	GND	Ground for Power Return
B12	GND	Ground for Power Return
B11	SS RX1+	Positive half of first SuperSpeed RX differential pair
B10	SS RX1-	Negative half of first SuperSpeed RX differential pair
B9	VBUS	POWER
B8	SBU2	Sideband Use (SBU)
B7	D-	USB2.0 differential pair
B6	D+	
B5	CC2	Configuration Channel
B4	VBUS	POWER
B3	SS TX2-	Negative half of second SuperSpeed TX differential pair
B2	SS TX2+	Positive half of second SuperSpeed TX differential pair
B1	GND	Ground for Power Return



PLUG INTO RECEPTACLE REPRESENT

CHECKED Leon		UNLESS OTHERWISE SPECIFIED TOLERANCE		NAME USB3.2 Gen2x2 (Gen2x2/Gen2x1) C1 Row SMT, offset 0.08mm, Dip Small Receptacle	
APPROVED Xavier		Dimensional Range / Tolerance		SCALE N/A	
REV. X1		XX XXX XXXX		UNIT mm	
DRAWN MIDDYV		40.35 40.25 40.15		SIZE A4	
REVISION RECORD 1		ANGLE 45°		SHEET 2/2	
NEW DESIGN		DRAWN		① CONTACTS : COPPER ALLOY/NICKEL-UNDERPLATED OVERAL/LEAD FREE TIN	
REVISION RECORD		DRAWN		② HOUSING : HIGH TEMPERATURE PLASTIC	
1		0500620		③ SHIELD : STAINLESS STEEL/NICKEL PLATING	
2				④ MATERIAL: BARE COPPER	
3				PART NO. JCN-U4CG-UAAA-XXX1	
4				DOC. NO. JCN-U4CG-UAAA-XXX1	
5					