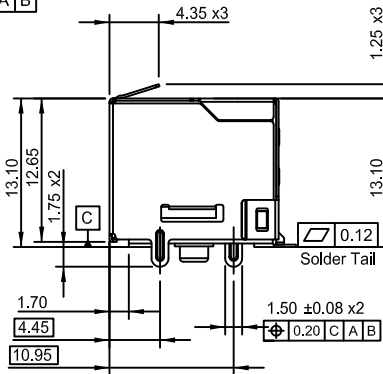
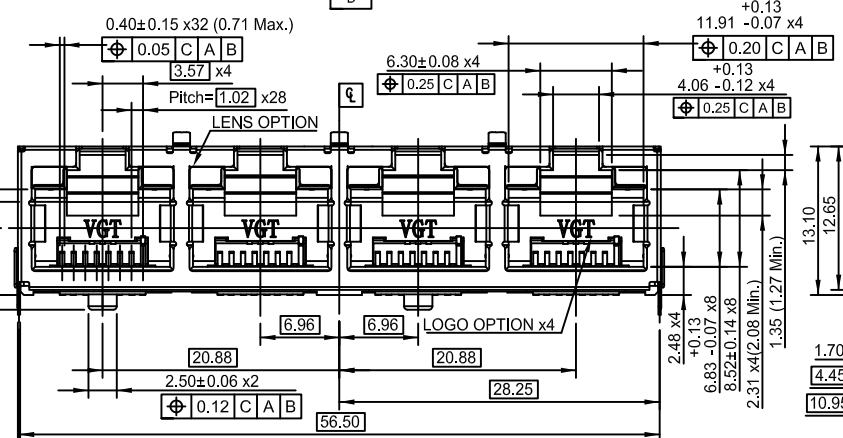
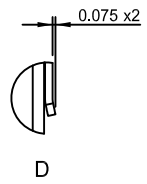
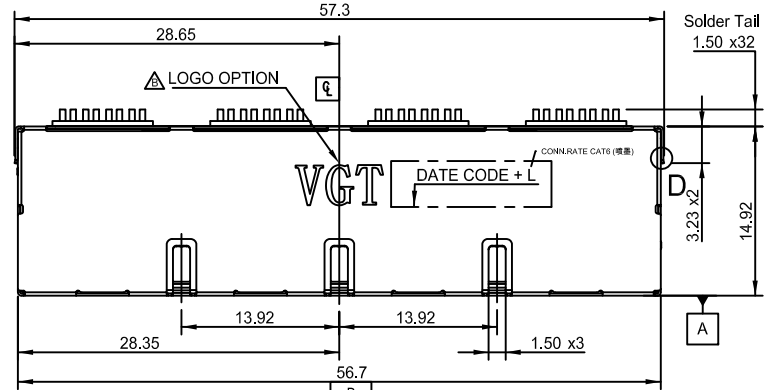
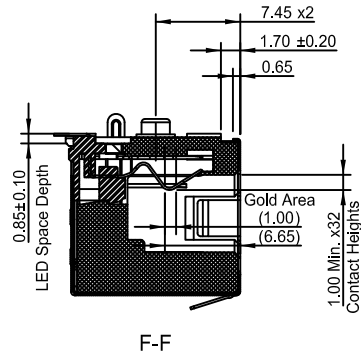
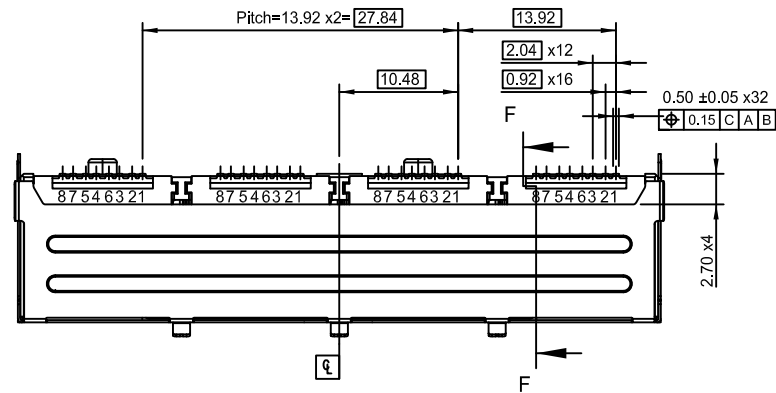
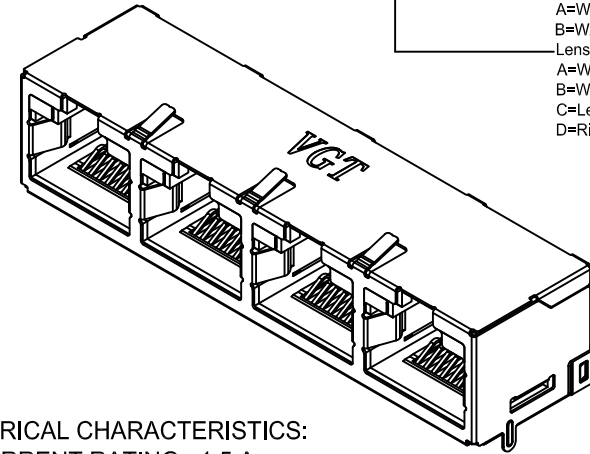


PART NUMBER: VR4L-A37-XBX1-XXX

- VGT LOGO:
 - 1=With LOGO
 - 2=W/O LOGO
- Gold Plating:
 - 1=Gold Flash (1u" Min.)
 - 2=3u"
 - 3=6u"
 - 4=10u"
 - 5=15u"
 - 6=30u"
- Plating Color:
 - B=Black
 - Y=Yellow
- Middle-Shield Type:
 - A=With Middle-Shield
 - B=W/O Middle-Shield
- Lens Type:
 - A=W/O Lens
 - B=With Lens
 - C=Left Lens
 - D=Right Lens



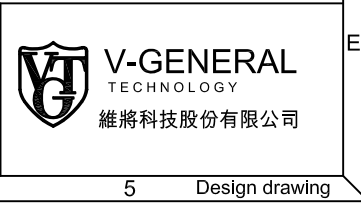
1. ELECTRICAL CHARACTERISTICS:
 - 1-1 CURRENT RATING : 1.5 A
 - 1-2 VOLTAGE RATING : 125V AC RMS.
 - 1-3 DIELECTRIC WITH STANDING : 1000V AC -CONTACT-TO-CONTACT
1500V AC - CONTACT-TO-SHIELD
 - 1-4 INSULATION RESISTANCE : 500MΩ MIN. AT DC 100V.
 - 1-5 CONTACT RESISTANCE : 20mΩ MAX.
 2. MECHANICAL CHARACTERISTICS:
 - 2-1 INSERTION FORCE : 20 N MAX.
 - 2-2 WITHDRAWAL FORCE : 20 N MAX.
 - 2-3 EFFECTIVENESS OF COUPLING DEVICES : 50 N FOR 60 S ± 5 S
 - 2-4 DURABILITY : 750 CYCLES
 3. ENVIRONMENTAL :
 - 3-1 OPERATING TEMPERATURE: -40°C TO +85°C.
 4. LED SIZE SPECIFICATIONS=1.60 x 1.60 x 0.55mm ± 0.10 (L X W X H)
- MEET FCC PART 68 & IEC60603-7 SPECIFICATION INFORMATION

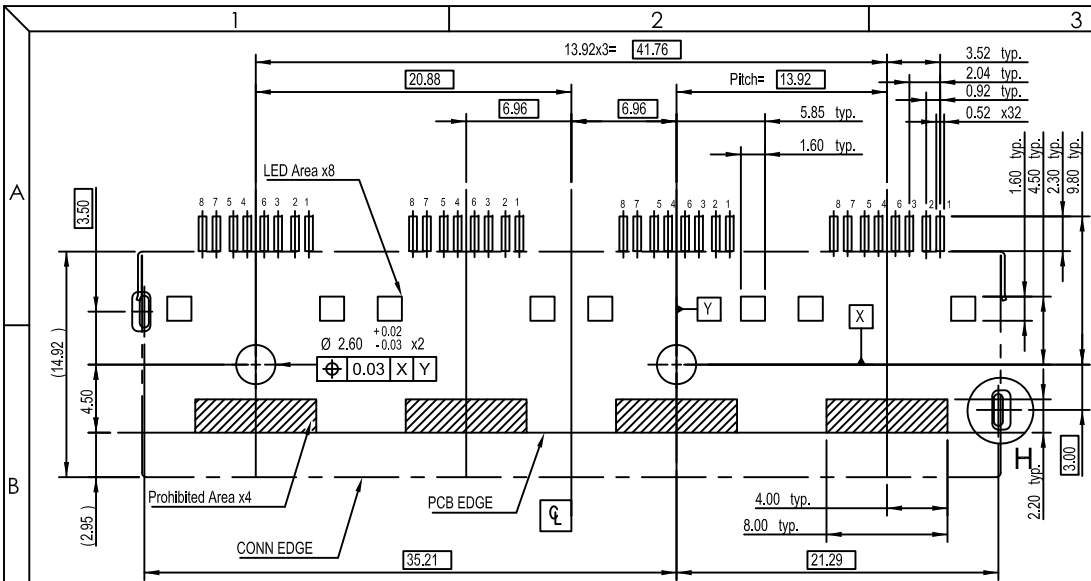
△	NEW DESIGN	UNA	030426
MARK	REVISION RECORD	DRAWN	MM'DD'YY'

CHECKED	UNA
APPROVED	KL
REV.	A

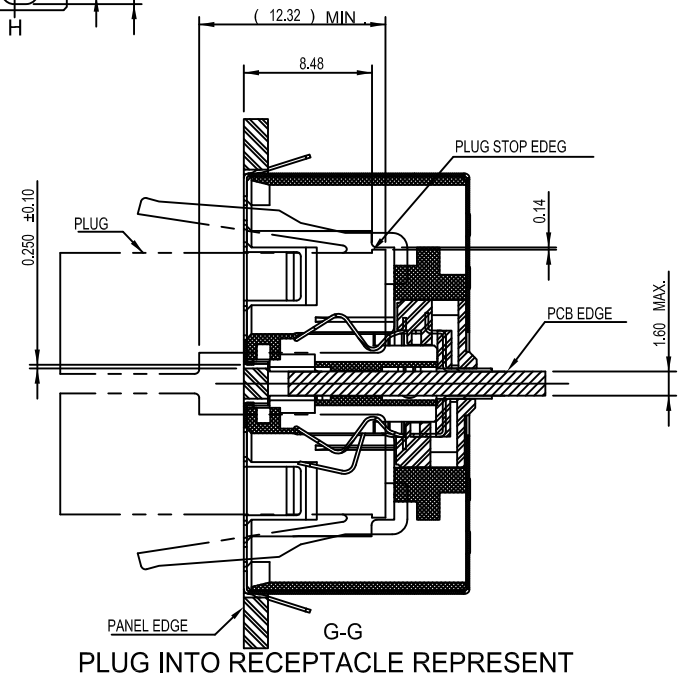
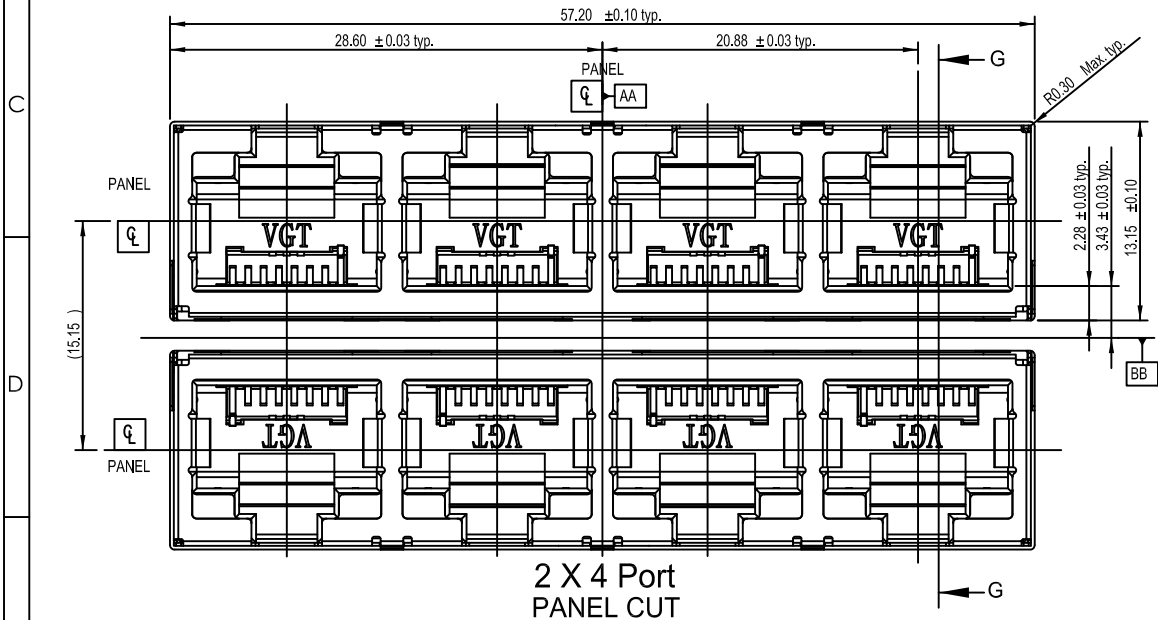
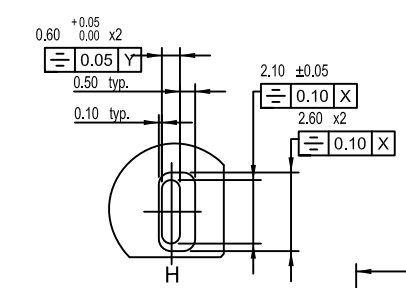
UNLESS OTHERWISE SPECIFIED TOLERANCE	NAME	RJ45 1X4, Cat6, H=13.10mm, SMT+DIP Type, Rec. (Withstand Voltage Type)
Dimension Range	SCALE	UNIT
X.X	NA	mm
X.XX	SIZE	SHEET
X.XXX	A4	1/2
ANGLE		

MATERIAL/Plated/Notes	PART NO. & DOC NO.
① SHIELD: STAINLESS STEEL/NICKEL PLATING	VR4L-A36-XBX1-XXX
② CONTACTS: COPPER ALLOY	
③ NICKEL UNDERPLATED OVER ALL LEAD FREE TIN ALLOY AT TERMINATION GOLD AT CONTACT AREA	
④ LENS: HIGH TEMPERATURE PLASTIC.	
⑤ HOUSING/MIDDLE HOUSING: HIGH TEMPERATURE PLASTIC, UL94 V-0	
⑥ Middle-Shield: SPCC	





PIN ASSIGNMENT					
Pin Number	Description	Signal Name(10base-T)	Signal Name(100base-T)	Signal Name(1000base-T)	Color
1	Transmit Data + or BiDirectional	TX+	TX+	BL_DA+	White Green
2	Transmit Data - or BiDirectional	TX-	TX-	BL_DA-	Green
3	Receive Data + or BiDirectional	RX+	RX+	BL_DB+	White Orange
4	Not Conncted or BiDirectional	n/c	n/c	BL_DC+	Blue
5	Not Conncted or BiDirectional	n/c	n/c	BL_DC-	White Blue
6	Receive Data - or BiDirectional	RX-	RX-	BL_DB-	Orange
7	Not Conncted or BiDirectional	n/c	n/c	BL_DD+	White Brown
8	Not Conncted or BiDirectional	n/c	n/c	BL_DD-	Brown



CHECKED UNA	UNLESS OTHERWISE SPECIFIED TOLERANCE	NAME		RJ45 1X4, Cat6, H=13.10mm, SMT+DIP Type, Rec. (Withstand Voltage Type)	
		SCALE	UNIT	Material/Plated/Notes	
APPROVED KL	Dimension Range Tolerance	NA	mm	① SHIELD; STAINLESS STEEL/NICKEL PLATING ② CONTACTS; COPPER ALLOY/ NICKEL UNDERPLATED OVER ALL LEAD FREE TIN ALLOY AT TERMINATION GOLD AT CONTACT AREA UL94 V-0 ③ HOUSING/MIDDLE HOUSING; HIGH TEMPERATURE PLASTIC, UL94 V-0 ④ Middle-Shield; SPCC	
REV. A	X.X ±0.35 X.XX ±0.25 X.XXX ±0.15 ANGLE ±5°	SIZE	SHEET	PART NO. & DOC NO.	
△	NEW DESIGN	UNA	030426	VR4L-A36-XBX1-XXX	
MARK	REVISION RECORD	DRAWN	MM'DD'YY'	 維將科技股份有限公司	